

# LPT

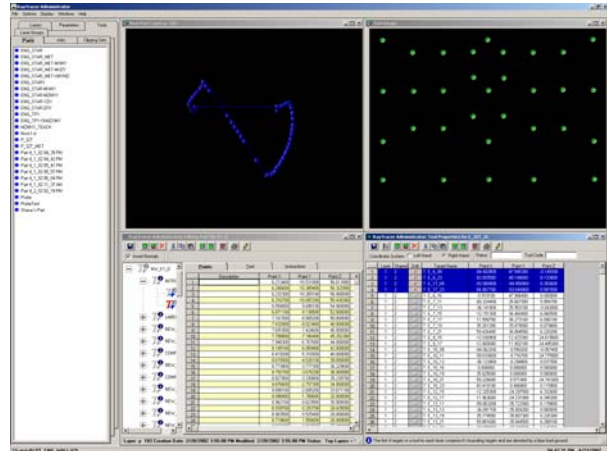


# PRODUCT SHEET

## RayTracer Administrator

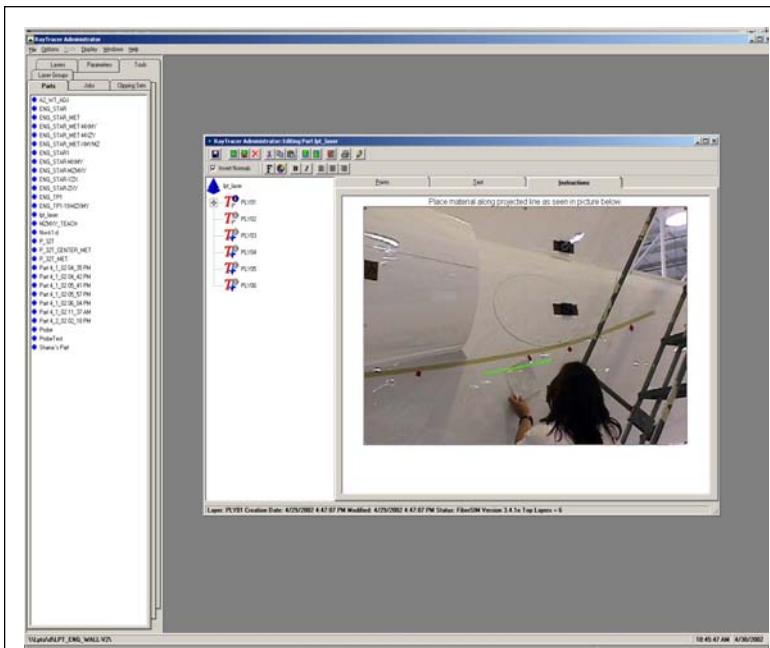
**RayTracer Administrator** is the graphical user interface that assists the user in creating the Jobs that work with any of the **LPT Laser Projectors**. This user-friendly interface runs under Windows 2000 / Xp Pro and provides the manufacturing engineer with the ability to perform the following functions:

- Create user log-in names and passwords
- Identify which lasers are used for which jobs
- Specify how a laser will operate
- Edit target locations & tool data
- Create a part in a layerized tree structure
- Add points and text to layers within a part
- Create multiple job files & parameter sets

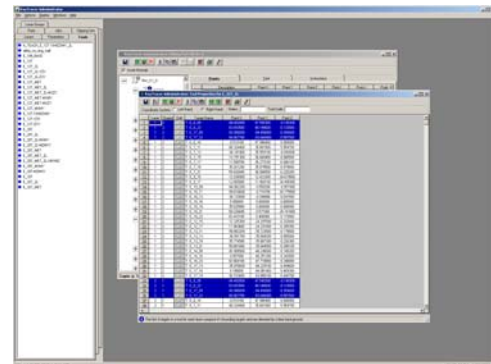


### Special Software Features

- Enable/Disable multiple job functions in a multiple document interface
- Import any type of laser projection part or tool data into LPT format
- Enable/Disable external LED sign display
- Import many types of work instructions
- Select targets used for drift check function
- View the part or tool as a graphical image
- Edit parts in a layered tree structure
- Create a multiple laser and multipart jobs
- Provides 8 different levels of security
- Create jobs, tools, parts, lasers, laser groups & job parameters



**The RayTracer 'Build Instructions' feature, allows the administrator to illustrate a procedure with work instructions using text, drawings, images or audio/video clips that become part of the job file.**



## Laser Projection Technologies, Inc.

8 Delta Drive, Londonderry NH, U.S.A. 03053  
Phone: (603) 421-0209 Fax: (603) 421-0072  
website: [www.lptcorp.com](http://www.lptcorp.com)