

# LPT

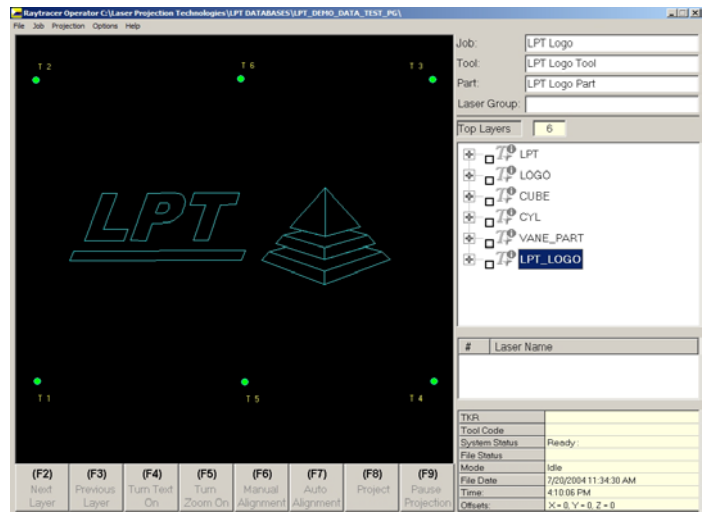


# PRODUCT SHEET

## RayTracer Operator

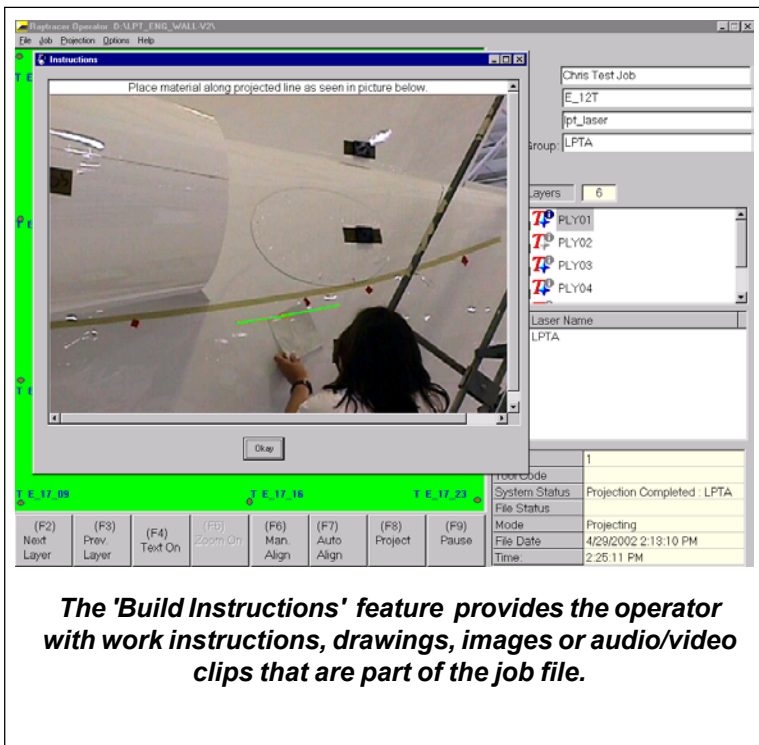
**RayTracer Operator** is the graphical user interface that allows the user to operate any of the **LPT Laser Projection Systems**. This user friendly interface runs under Windows 2000 / Xp Pro and provides the operator with the ability to perform the following functions:

- Change Tool, Parts and/or Lasers
- View Part and Tool from Varying Angles
- View Part and Tool in a Different Axis
- View Accuracy Data Prior to Starting Work
- Choose One or Several Layers for Projection
- Mark Various Layers as 'Complete'
- Turn Text Viewing 'On' or 'Off'
- Control the Auto Focus Feature
- Optional Record Image Module Available

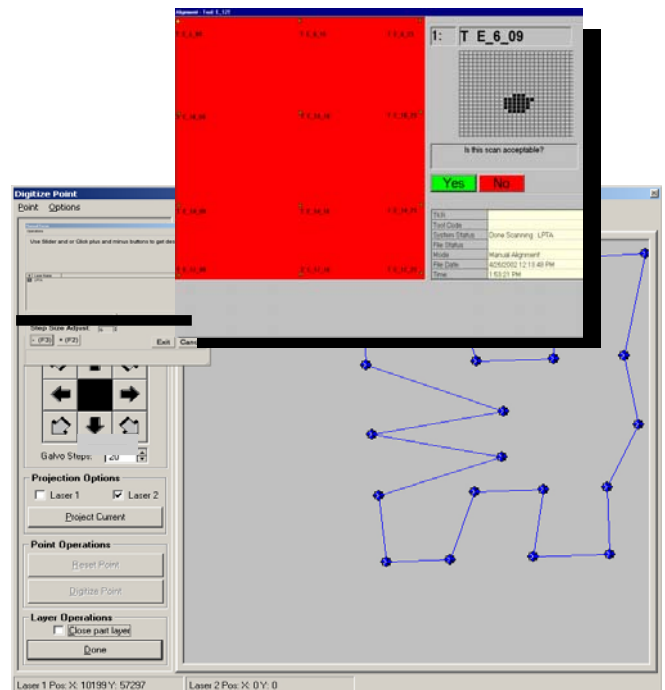


### Features

- Focus Using the System Software
- User Log-in Functionality
- 8 Security Levels
- Full Graphical Build Instruction Viewer
- Single or Multi-laser Functionality



**The 'Build Instructions' feature provides the operator with work instructions, drawings, images or audio/video clips that are part of the job file.**



## Laser Projection Technologies, Inc.

8 Delta Drive, Londonderry NH, U.S.A. 03053  
Phone: (603) 421-0209 Fax: (603) 421-0072  
website: [www.lptcorp.com](http://www.lptcorp.com)